



# GMT MONTHLY MEMBERSHIP PROGRESS REPORT

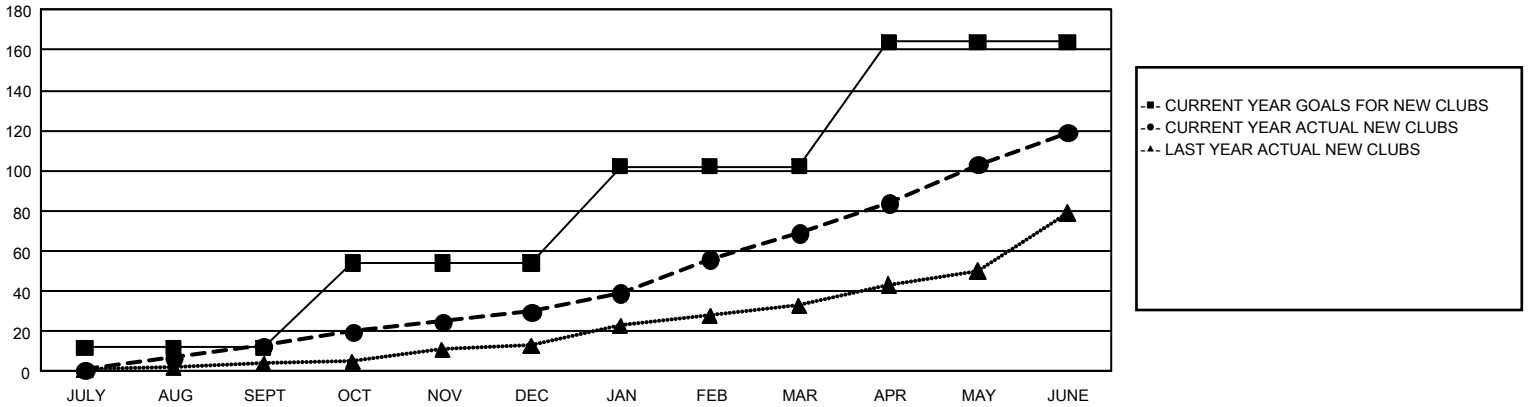
## GAT Constitutional Area 4

Results as of: 6/30/2024

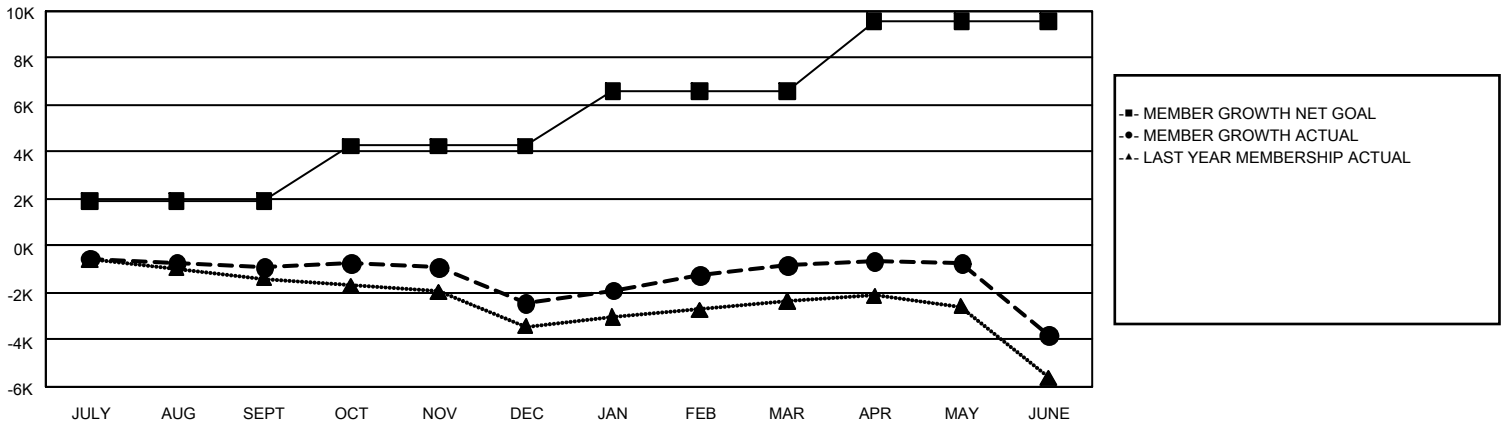
REPORT DOES NOT INCLUDE CLUBS IN UNDISTRICTED AREAS.

Clubs				Members			
RESULTS FOR 2023-2024				RESULTS FOR 2023-2024			
QUARTER	NEW CLUB GOAL	NEW CLUBS	DROPPED CLUBS	QUARTER	MEMBER GROWTH NET GOAL	MEMBER GROWTH ACTUAL	DROPPED MEMBERS ACTUAL (including transfers)
JULY/AUG/SEPT	12	13	56	JULY/AUG/SEPT	1,904	3,462	3,882
OCT/NOV/DEC	42	17	44	OCT/NOV/DEC	2,360	4,279	5,372
JAN/FEB/MAR	48	39	25	JAN/FEB/MAR	2,330	5,665	3,576
APR/MAY/JUNE	62	50	104	APR/MAY/JUNE	2,988	6,270	8,384

**GOALS AND ACTUAL NEW CLUBS CUMULATIVE**



**GOALS AND ACTUAL MEMBERS CUMULATIVE**



DROPPED CLUBS: 229	5,594 CLUBS OF 8,975 ADDED 1 OR MORE NEW MEMBERS	<b>GENDER DISTRIBUTION</b>
<b>DROPPED MEMBERS</b>		MALE                    162,912 (74.07%)
DECEASED                    2,342		FEMALE                    56,987 (25.91%)
CLUB CANCELLED            1,097	<a href="#">CLICK HERE FOR CUMULATIVE MEMBERSHIP DATA</a>	TOTAL FAMILY UNIT MEMBERS                    11,072
OTHER                    17,739		FAMILY MEMBERS PAYING HALF DUES                    5,764
<b>TOTAL                    21,178</b>		